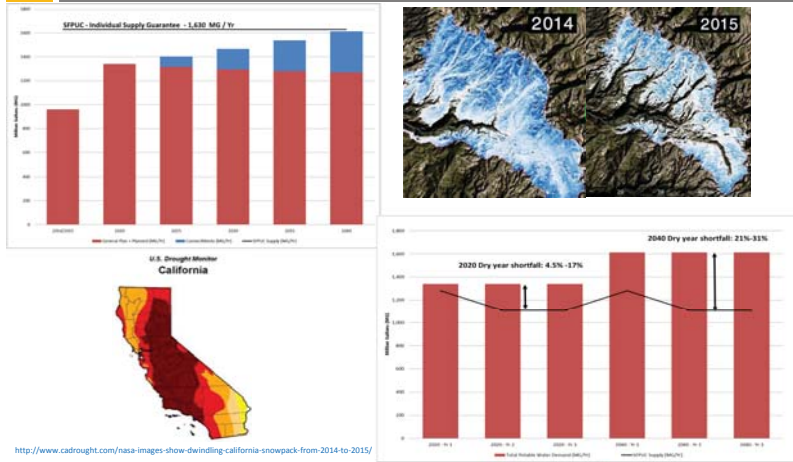
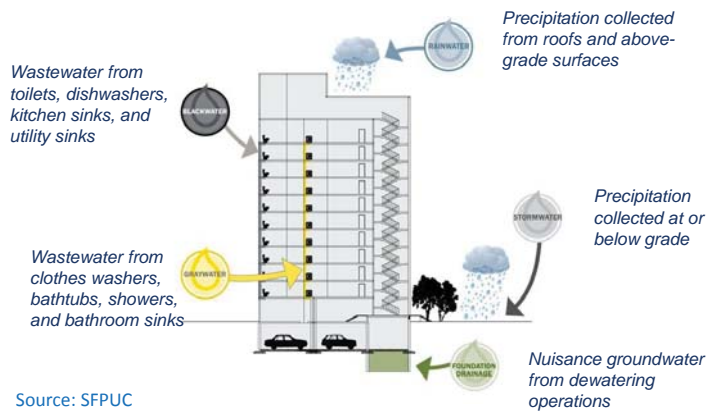


WATER DEMAND & RECYCLED WATER

Water Demand Urban Water Management Plan

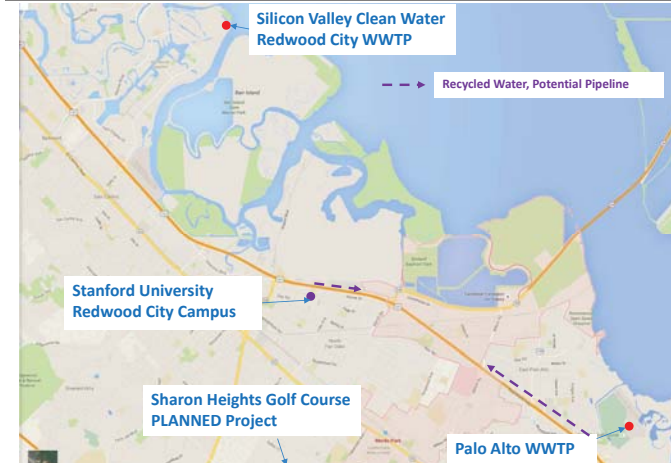


Recycled Water On-site Treatment Water System Master Plan 2016



Source: SFPUC

Recycled Water – Potential Sources Water System Master Plan 2016



Recycled Water On-site Treatment Innovative, Building Resiliency



181 Fremont St., SF

SFPUC Headquarters

PG&E: 270 Folsom St., SF

http://www.dewater.com/water_recycling/greywater.html

HAZARD MITIGATION & SEA LEVEL RISE

Hazard Mitigation & Sea Level Rise

CONNECTMENLO
menlo park land use & mobility update

2015 Superior Court of CA, San Mateo County - Grand Jury Report "Flooding Ahead"

- 8" rise between 1897-2006, tide station at Golden Gate Bridge

Sea-Level Rise Projections for Areas South of Cape Mendocino		
Time Period	CO-CAT SLR Guidance Document (South of Cape Mendocino)	
	Feet	Inches
2000-2030	0.13 to 0.98	1.56 to 11.76
2000-2050 (mid-century)	0.39 to 2.00	4.68 to 24.00
2000-2100 (end of century)	1.38 to 5.48	16.56 to 65.76

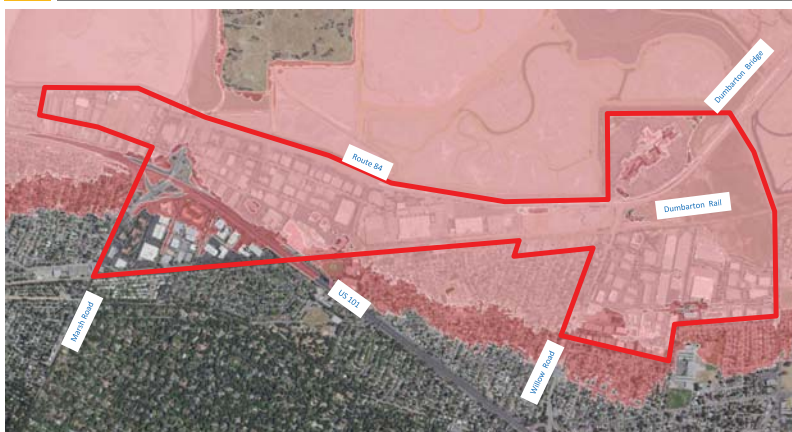
Sources: June 2012 National Research Council report on Sea-Level Rise for the Coasts of California, Oregon, and Washington; Coastal and Ocean Working Group of the California Climate Action Team (CO-CAT)

San Mateo County Vulnerability Assessment

- 100 year event + up to 197" (16.4') Sea Level Rise, above mean high high water

Sea Level Rise – 3.3' Coastal Flooding and Permanent Inundation

CONNECTMENLO
menlo park land use & mobility update



<http://data.prbo.org/apps/ocof/>

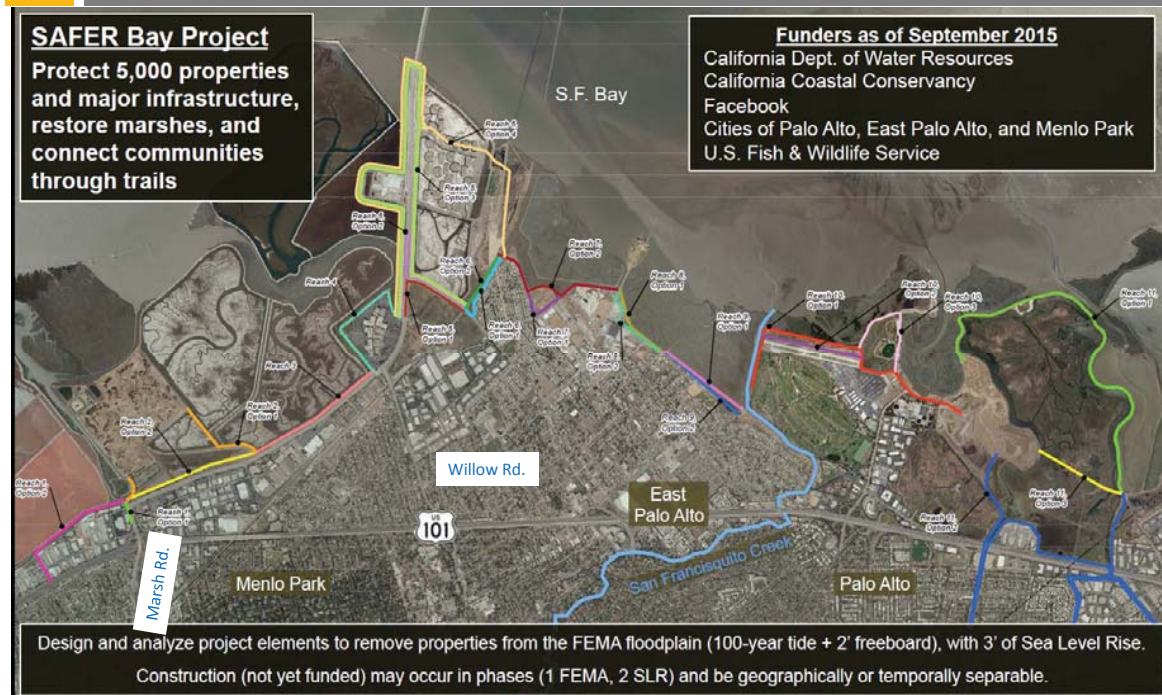
M-2 Area

SAFER Bay

CONNECTMENLO
menlo park land use & mobility update

SAFER Bay Project
Protect 5,000 properties and major infrastructure, restore marshes, and connect communities through trails

Funders as of September 2015
California Dept. of Water Resources
California Coastal Conservancy
Facebook
Cities of Palo Alto, East Palo Alto, and Menlo Park
U.S. Fish & Wildlife Service



GREEN BUILDING CASE STUDIES

Hamilton Park by Clarum Menlo Park, CA



Slide 37

- Energy Star rating
- California Green Builder Certification
- Zero Energy Home Design
- Photovoltaic system on roof (solar electric)
- Tankless water heaters
- Low emission vinyl windows
- Increased insulation
- Radiant roof barrier
- Tight ducting
- Fluorescent lighting
- Low-flow faucets and toilets
- Drought tolerant landscaping
- 47 single family homes in Belle Haven
- 20 Below Market Rate (BMR) units
- Built in 2005



Menlo Passive by Clarum Menlo Park, CA



Slide 38

- Energy Efficiency
- Comfort
- Durability
- Health
- Water conservation
- Eco Building materials
- Photovoltaic (solar electric) and solar hot water
- Heat recovery ventilator (HRV)
- High performance doors and windows
- High efficiency framing
- Reclaimed materials
- Air and moisture barrier and sealing
- Insulated inside, outside, foundation, roof and structural panels
- Drought tolerant landscaping and water efficient fixtures
- First passive home in San Mateo County
- Built in 2011 on Lemon St.



Yang & Yamazaki Environment & Energy Stanford, CA



Slide 20

- **Certification:** LEED-EBOM Platinum (2013)
- **Building Type:** Classroom/Office/Lab (166,000 ft²)
- **Features**
 - High performance envelope
 - Natural ventilation (e.g. internal atria, vents w/ efficient active beams for mechanical cooling)
 - Solar photovoltaics
 - Water conservation systems (e.g. waterless urinals, dual flush toilets)
 - Recycled materials and sustainable products (e.g. concrete floors)



David & Lucile Packard Foundation Los Altos, CA



Slide 15

- **Certification:** LEED-NC Platinum (2012)
- **Building Type:** Office (49,000 ft²)
- **Features**
 - Two daylight office wings with blinds and shades to control solar heat gain and glare
 - Rainwater collection for toilet flushing and irrigation
 - Stormwater retained on-site
 - Zero Net Energy performance
 - Energy use can be reduced by 65% through integrated building design and aggressive reductions in plug loads
 - Innovative use of roof-mounted photovoltaic panels will offset any energy used

