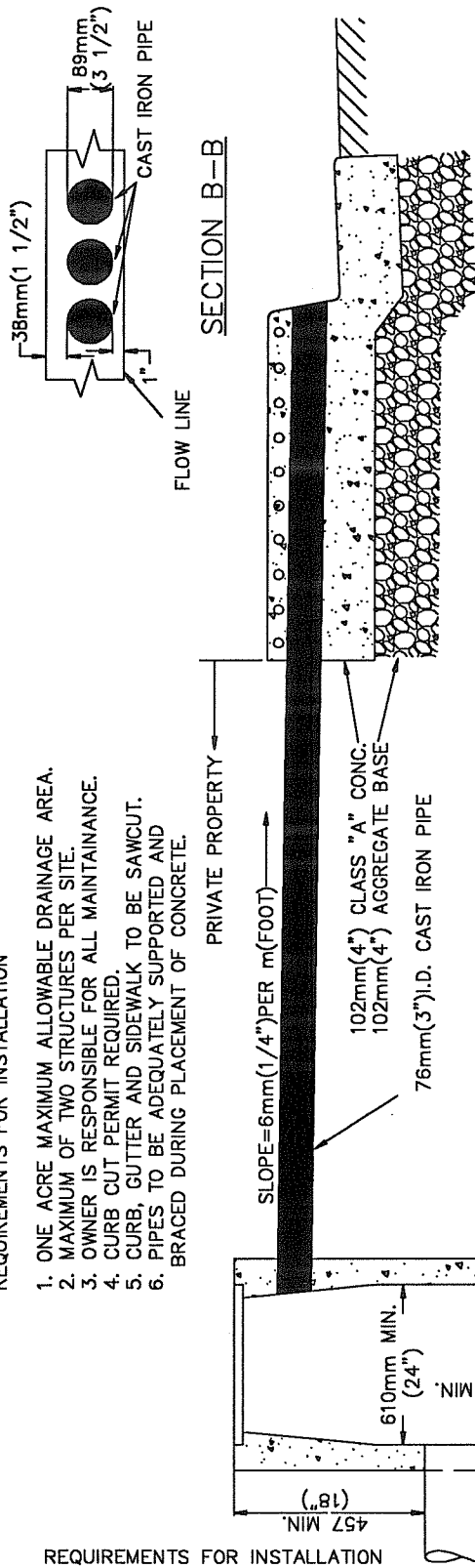


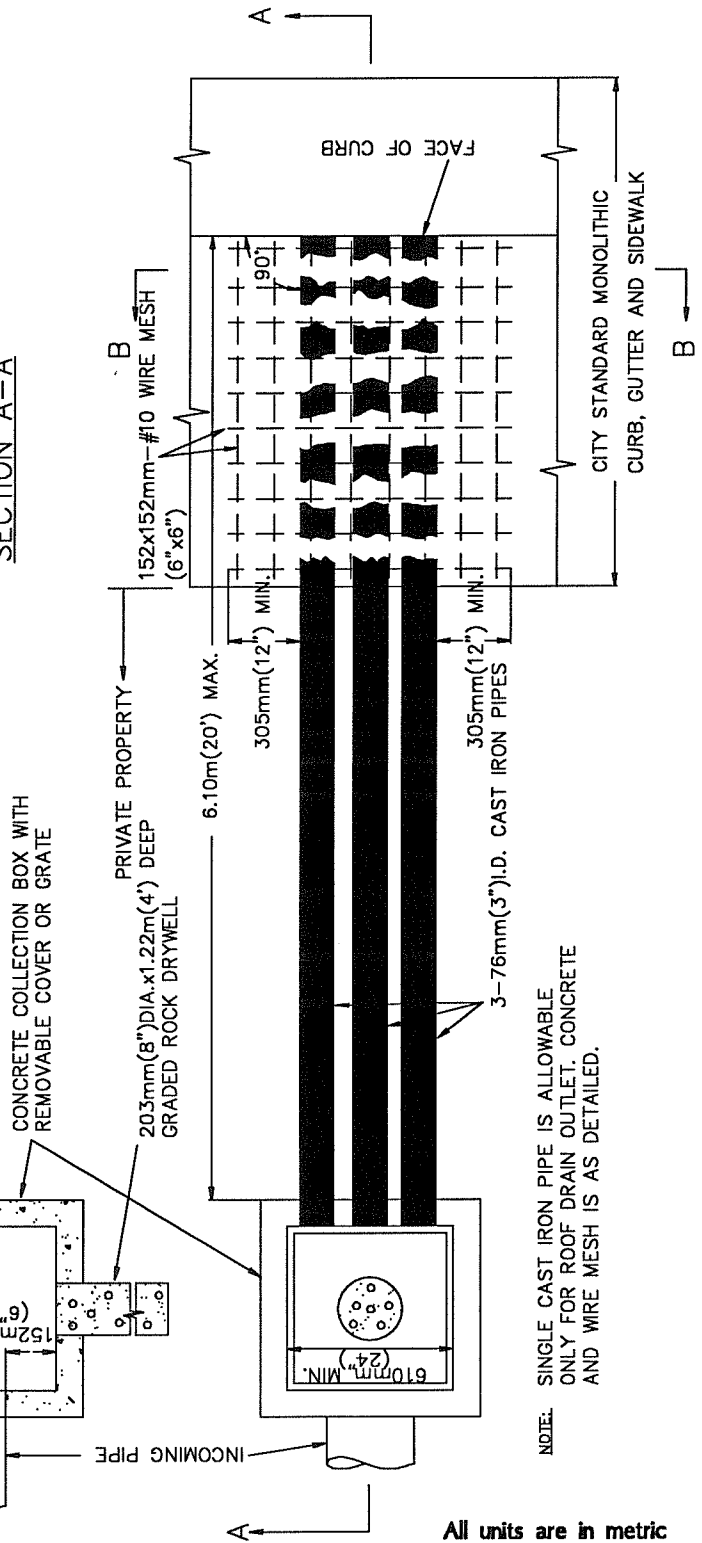
REQUIREMENTS FOR INSTALLATION

1. ONE ACRE MAXIMUM ALLOWABLE DRAINAGE AREA.
2. MAXIMUM OF TWO STRUCTURES PER SITE.
3. OWNER IS RESPONSIBLE FOR ALL MAINTENANCE.
4. CURB CUT PERMIT REQUIRED.
5. CURB, GUTTER AND SIDEWALK TO BE SAWCUT.
6. PIPES TO BE ADEQUATELY SUPPORTED AND BRACED DURING PLACEMENT OF CONCRETE.

REQUIREMENTS FOR INSTALLATION



SECTION A-A



NOTE:
SINGLE CAST IRON PIPE IS ALLOWABLE ONLY FOR ROOF DRAIN OUTLET. CONCRETE AND WIRE MESH IS AS DETAILED.

All units are in metric
Non-metric units in brackets

ACAD FILENAME: STANCURB



CITY OF MENLO PARK STANDARD DETAILS

NO.	REVISIONS	DATE

STANDARD CURB DRAIN SYSTEM

APPROVED

Y. A. Cronson
Director of Engineering Services R.C.E. No.40998

DRAWN CHECKED NN DATE 1-1-97 SCALE NTS SHEET 1 OF 1

STD. DETAIL No.: **DR-8**