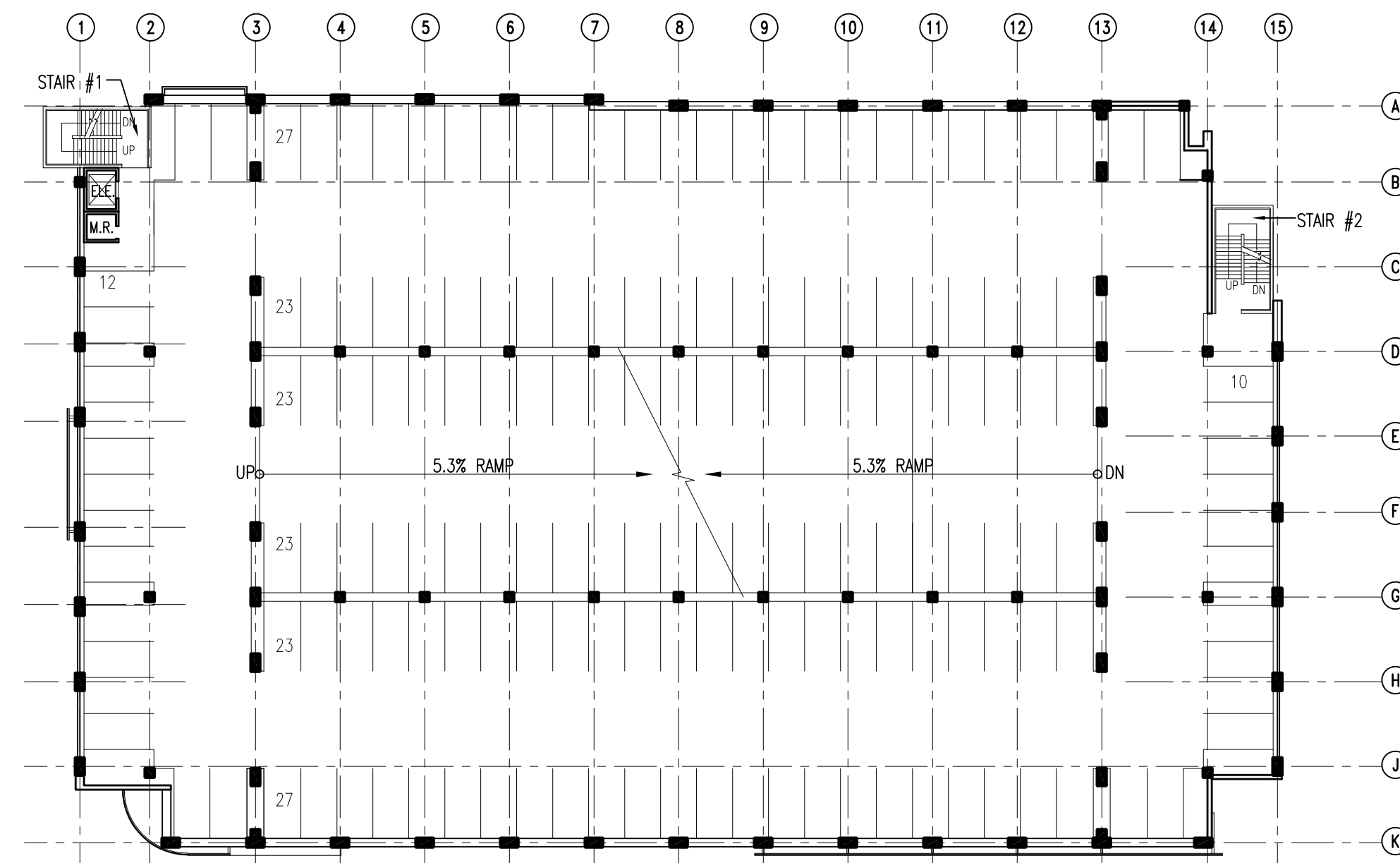
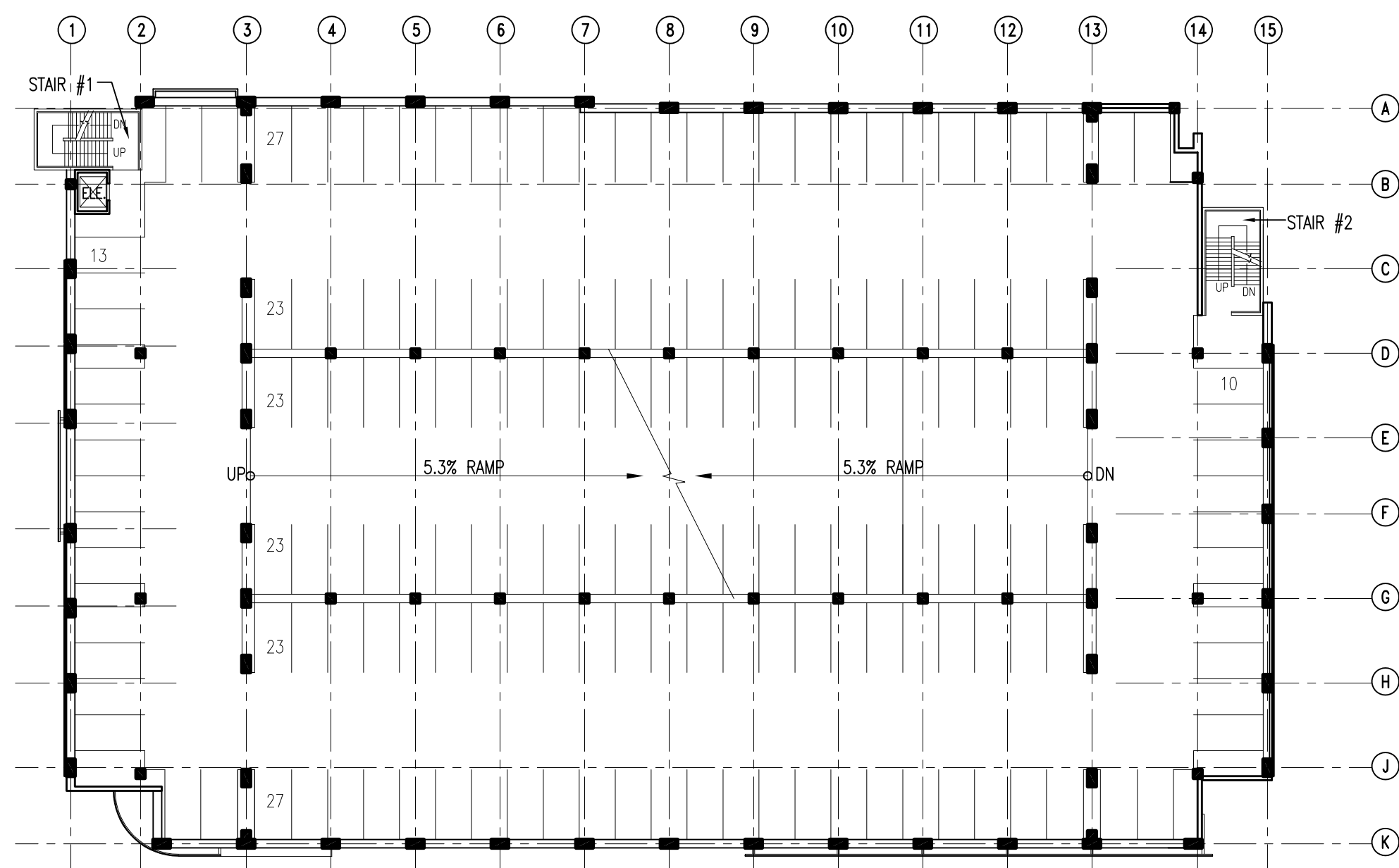


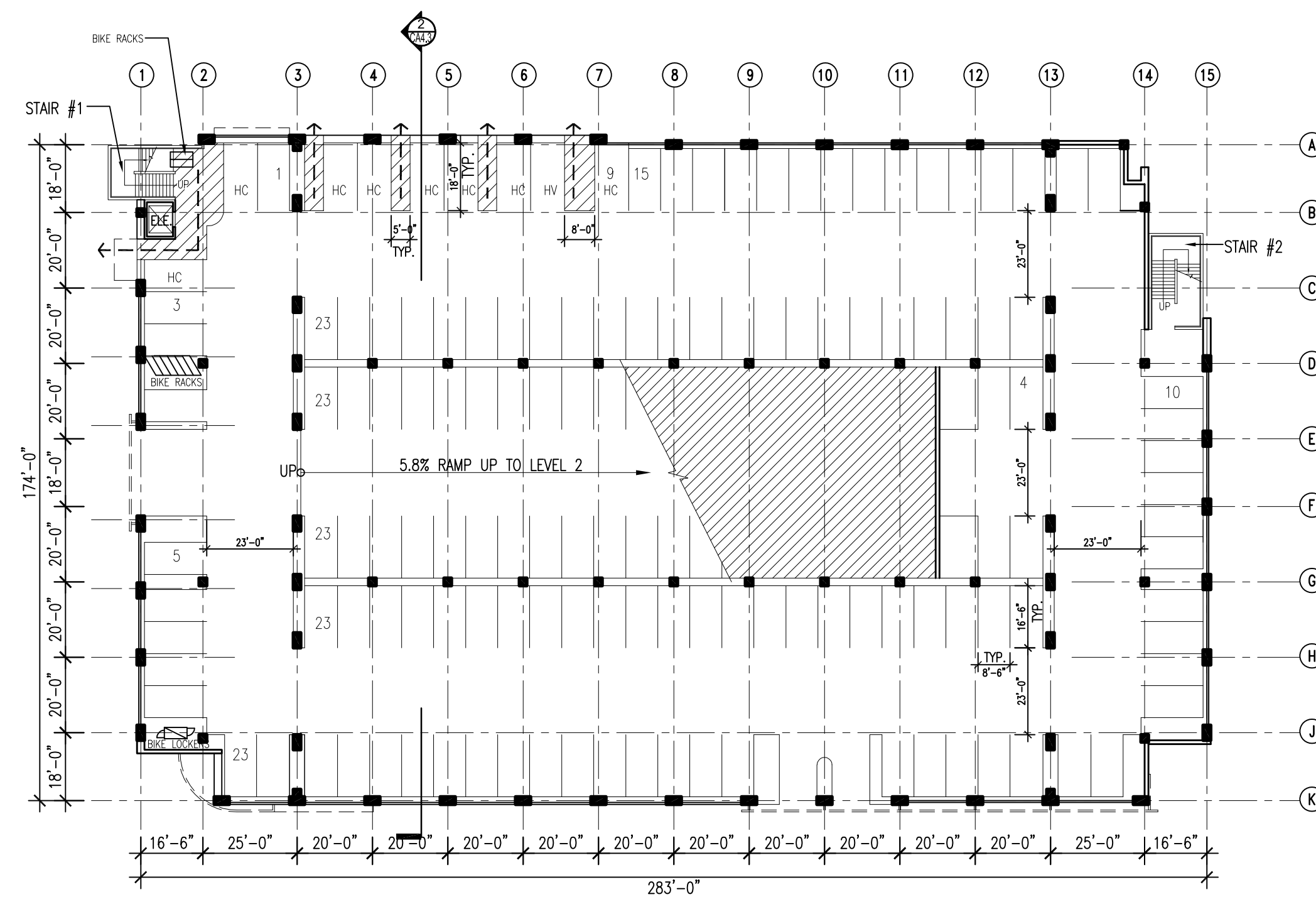
ROOF LEVEL PLAN



2ND LEVEL PLAN



3RD & 4TH LEVEL PLAN



1ST LEVEL PLAN

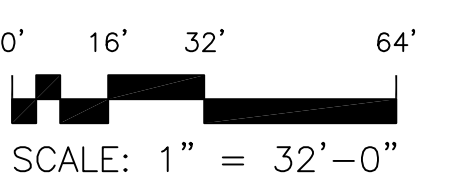
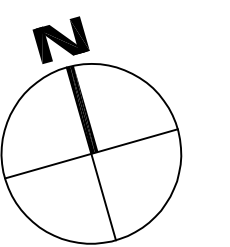
FLOOR AREAS

1ST LEVEL	51,262	SF
2ND LEVEL	49,372	SF
3RD LEVEL	49,372	SF
4TH LEVEL	49,372	SF
ROOF LEVEL	39,040	SF
TOTAL	238,418	SF

PARKING PROVIDED

1ST LEVEL	162 STALLS (INCLUDING 9 HANDICAP STALLS)
2ND LEVEL	168 STALLS
3RD LEVEL	169 STALLS
4TH LEVEL	169 STALLS
ROOF LEVEL	135 STALLS
TOTAL	803 STALLS (INCLUDING 9 HANDICAP STALLS)
BIKE:	8 RACKS, 2 LOCKERS

OCCUPANT: S-2 (OPEN PARKING STRUCTURE)
 CONSTRUCTION TYPE: IIB
 FIRE SPRINKLER: FULLY SPRINKLERED



Jul 06, 2009 - 1:59pm ldi P:\Bohannon\UP\dep\956602\Draw\Const\Arch\4-1-09\118.dwg