

TYPICAL: 2ND THRU 5TH LEVEL PLAN

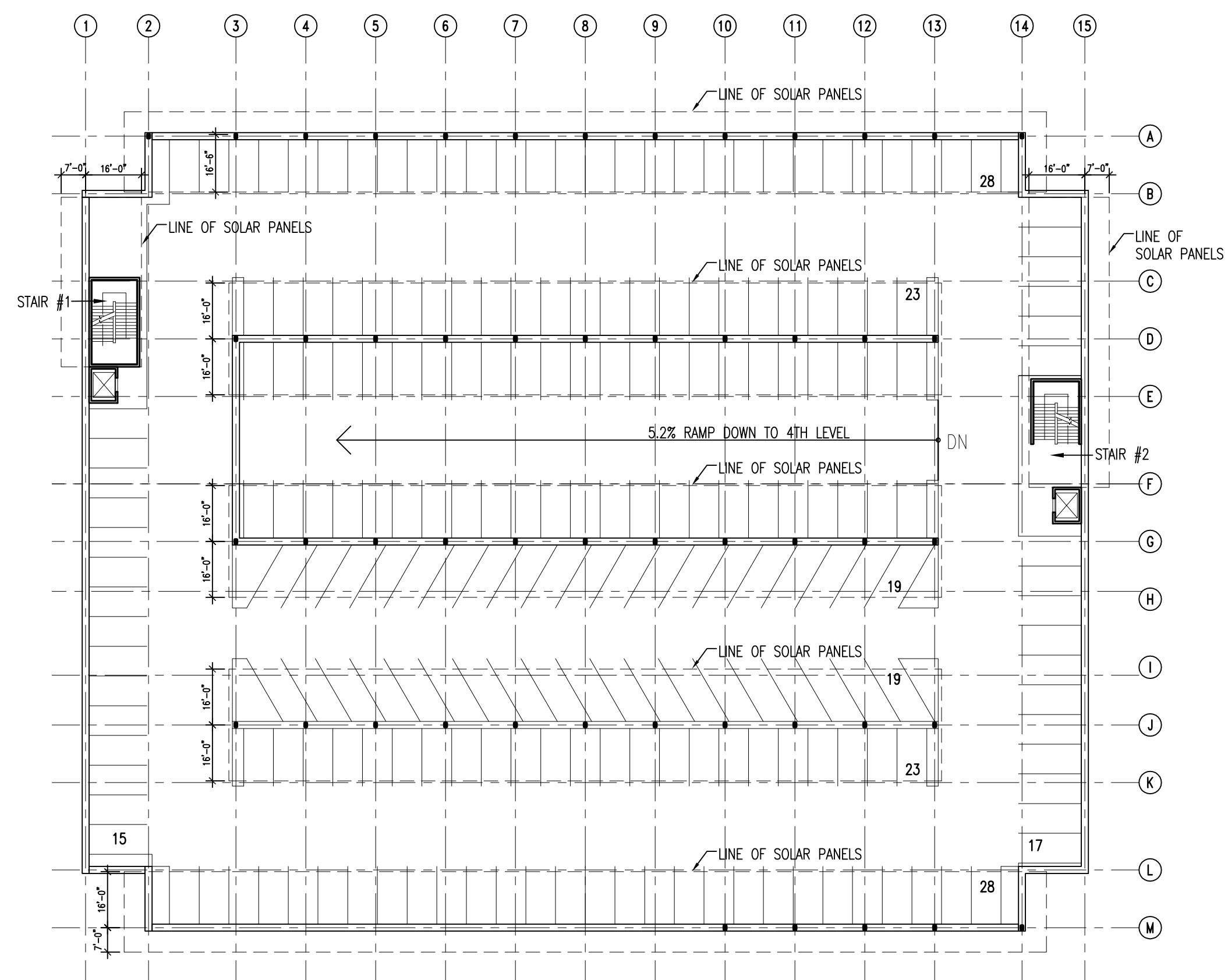
FLOOR AREAS

1ST LEVEL	65,940	SF
2ND LEVEL	64,620	SF
3RD LEVEL	64,620	SF
4TH LEVEL	64,620	SF
5TH LEVEL	64,620	SF
ROOF LEVEL	53,420	SF
TOTAL	377,840	SF

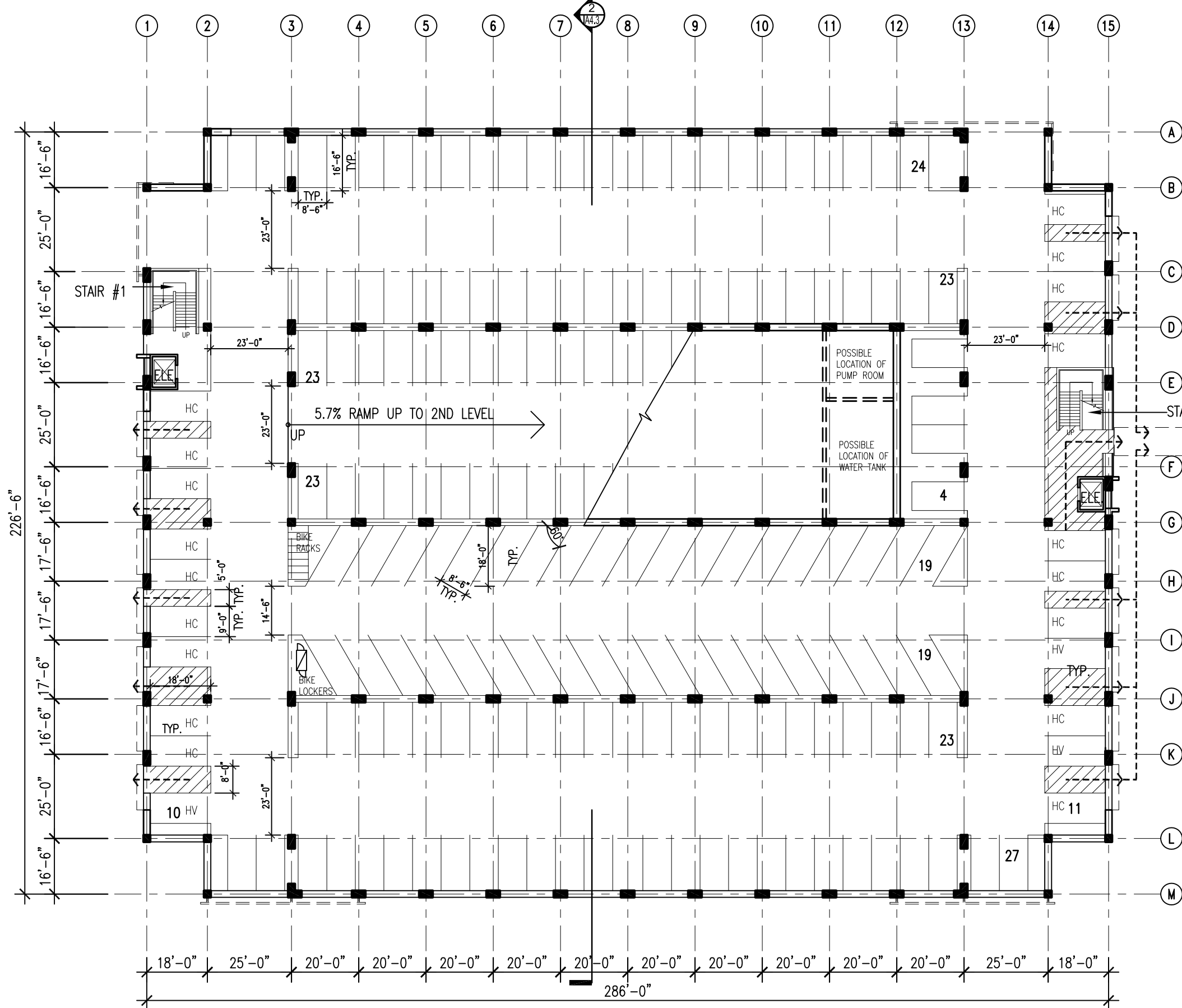
PARKING PROVIDED

ON GRADE	206	CARS (INCLUDING 21 HANDICAP CARS)
2ND LEVEL	213	CARS
3RD LEVEL	213	CARS
4TH LEVEL	213	CARS
5TH LEVEL	213	CARS
ROOF LEVEL	172	CARS
TOTAL	1,230	CARS (INCLUDING 21 HANDICAP CARS)
BIKE:	8	RACKS, 2 LOCKERS

OCCUPANT: S-2 (OPEN PARKING STRUCTURE)
 CONSTRUCTION TYPE: IIB
 FIRE SPRINKLER: FULLY SPRINKLERED

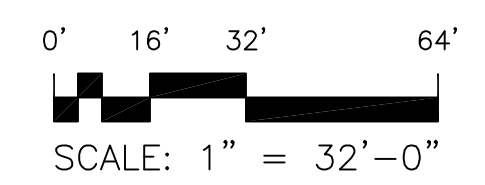


ROOF LEVEL PLAN



1ST LEVEL PLAN

ACCESSIBLE EXITS TO COVERED WALKWAY



Jul 06, 2009 - 1:46pm ldi P:\Bohannon\MP\dep\356602\Draw\Indep\Arch\4.1 - cplan.dwg