

RESULTS ARE IN

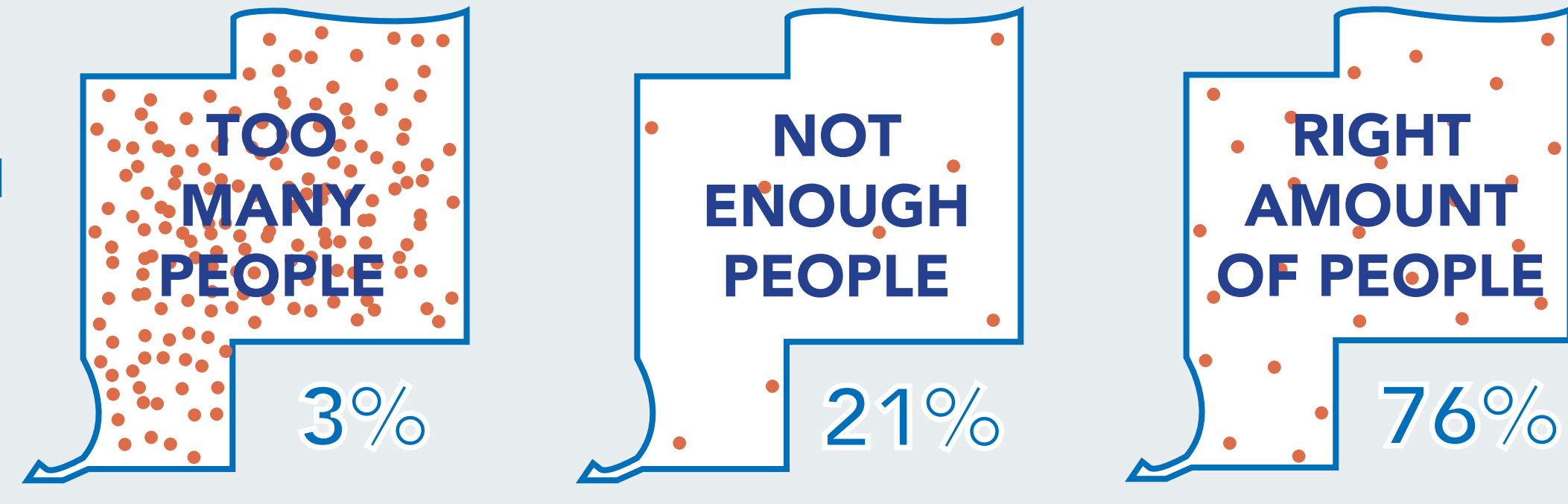
COMMUNITY INPUT FROM APRIL 8

Main Take-Away: Based on the input below, there is support for the park plan to explore additional activities and amenities.

where do you live?



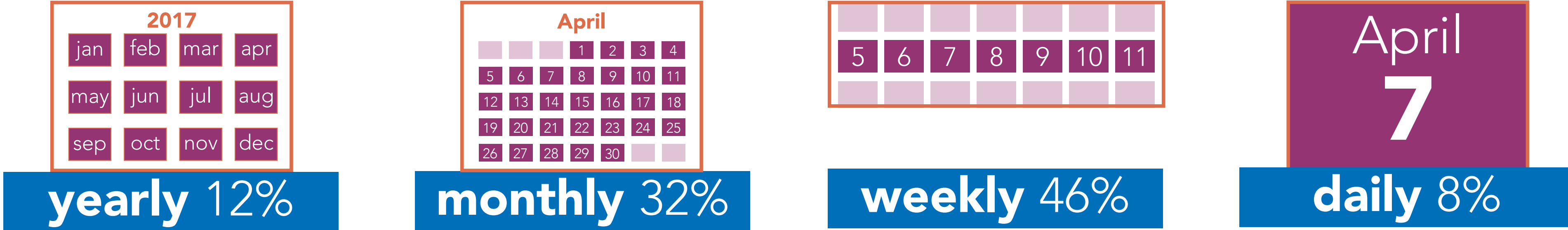
how would you describe the park?



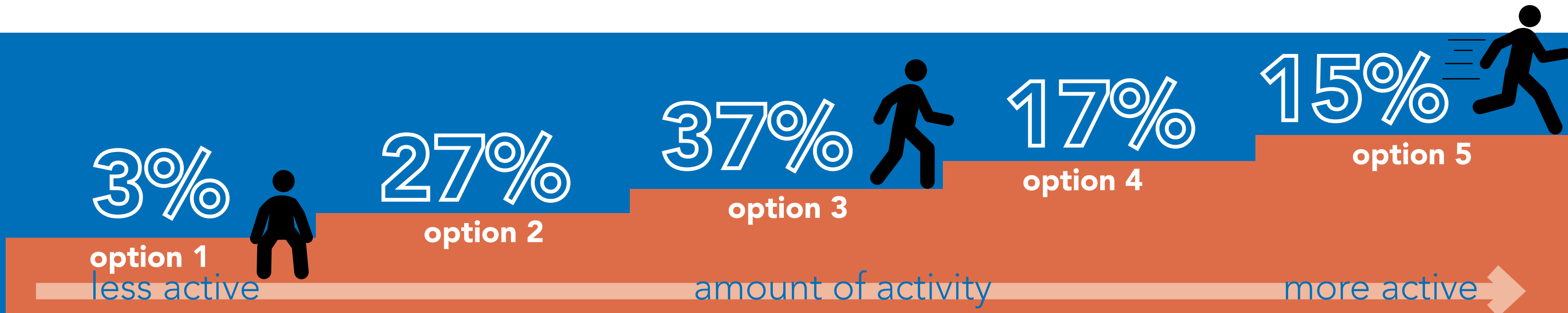
who participated?

39 OPEN HOUSE
70 ONLINE SURVEY

how often do you visit the park?



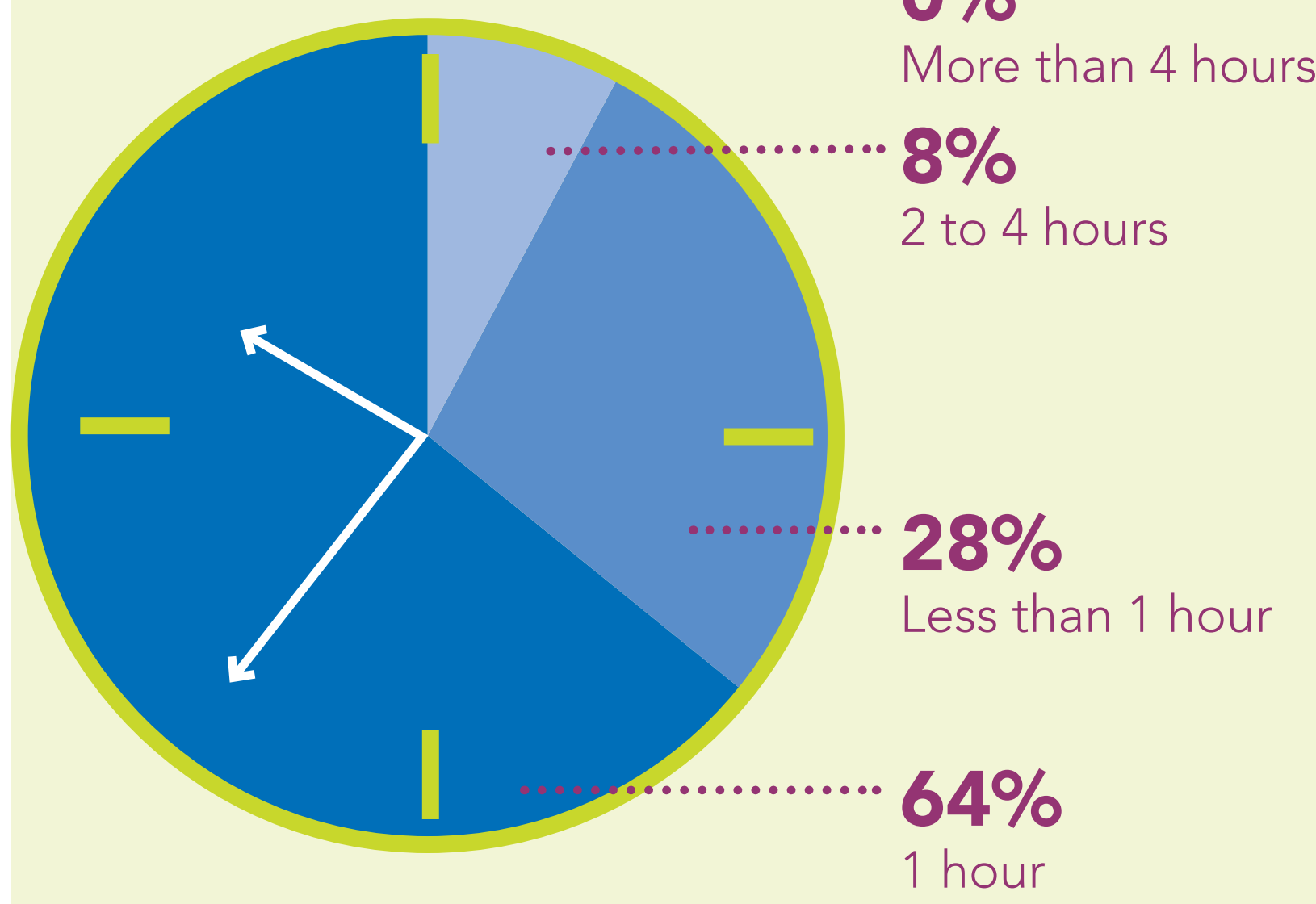
HOW DO YOU DEFINE PASSIVE RECREATION?



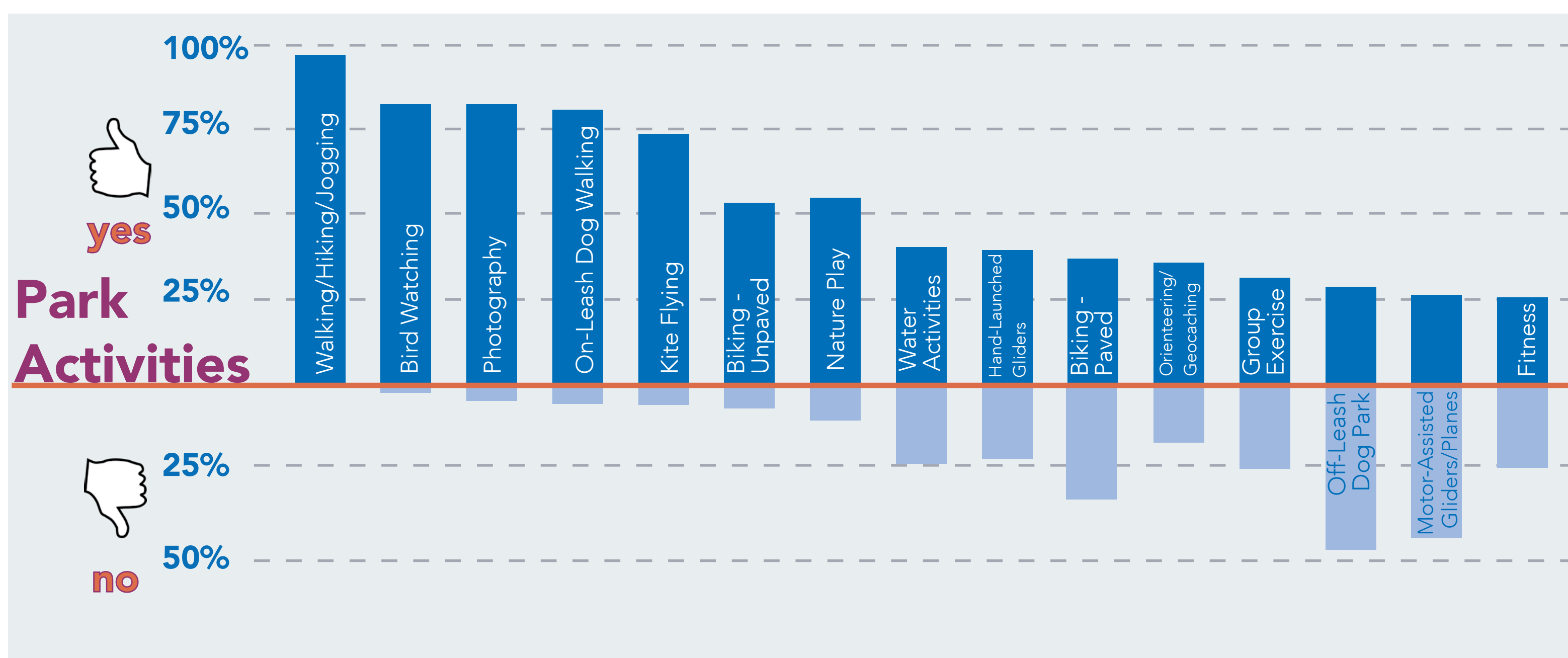
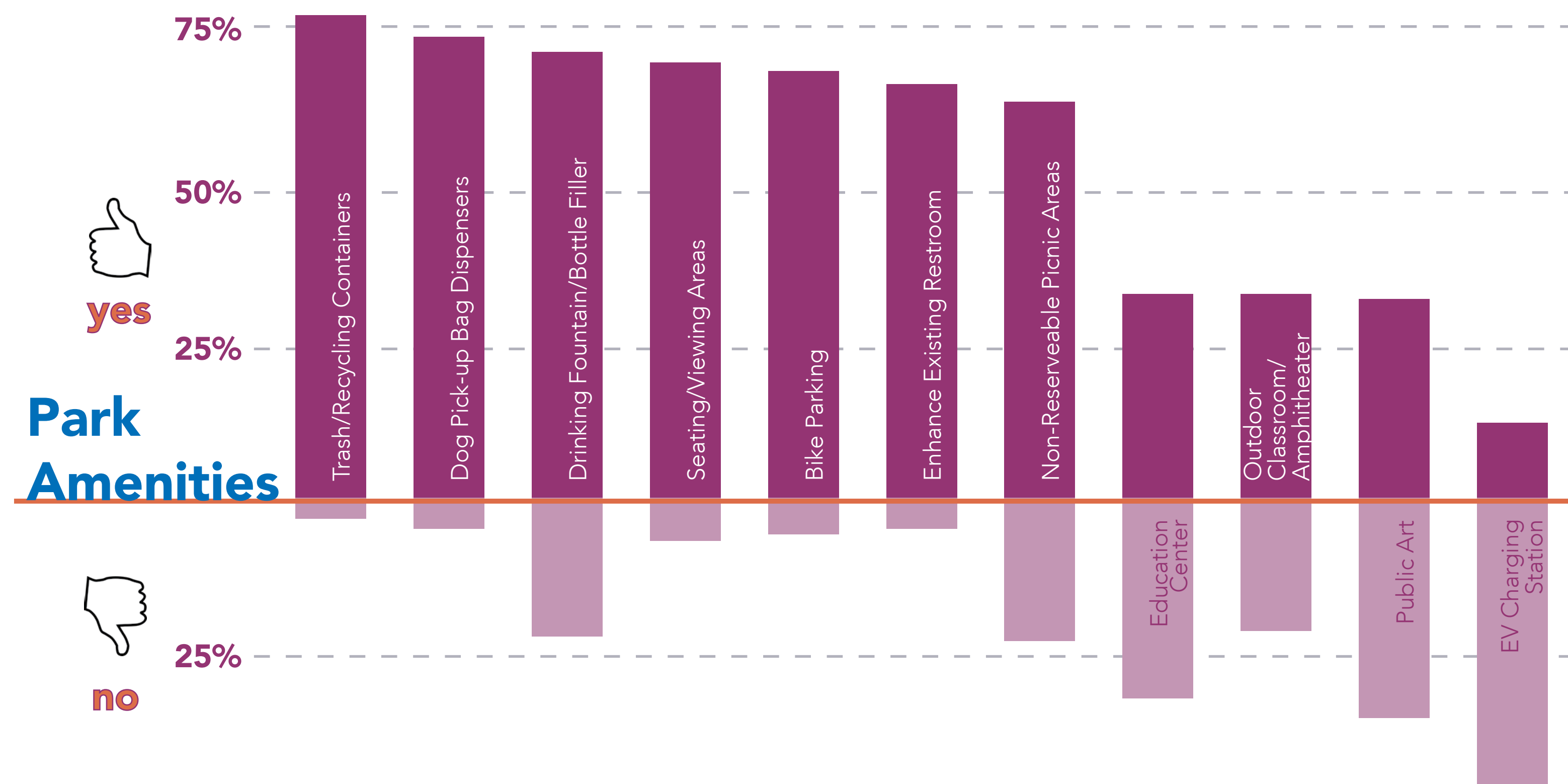
option 4 + option 5 = 32%
option 1 + option 2 = 30%

more participants are in favor of more active activities

When you visit the park, how often do you stay?



Is there anything you definitely do not want to see at the park?



GOALS AND OBJECTIVES

GOAL 6
Sustainable funding

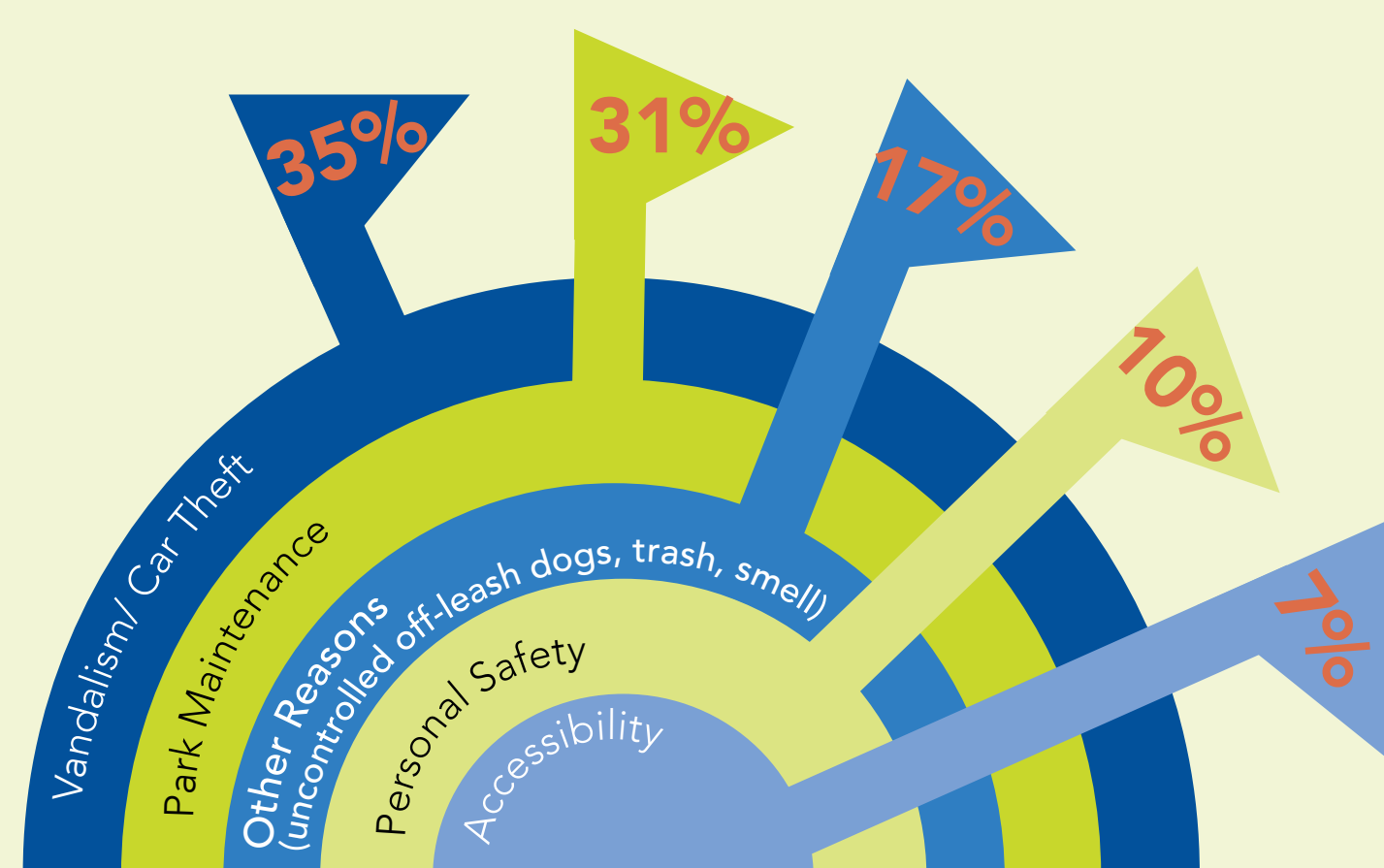
GOAL 1
Inclusive outreach process

GOAL 4
Protect habitat and landfill

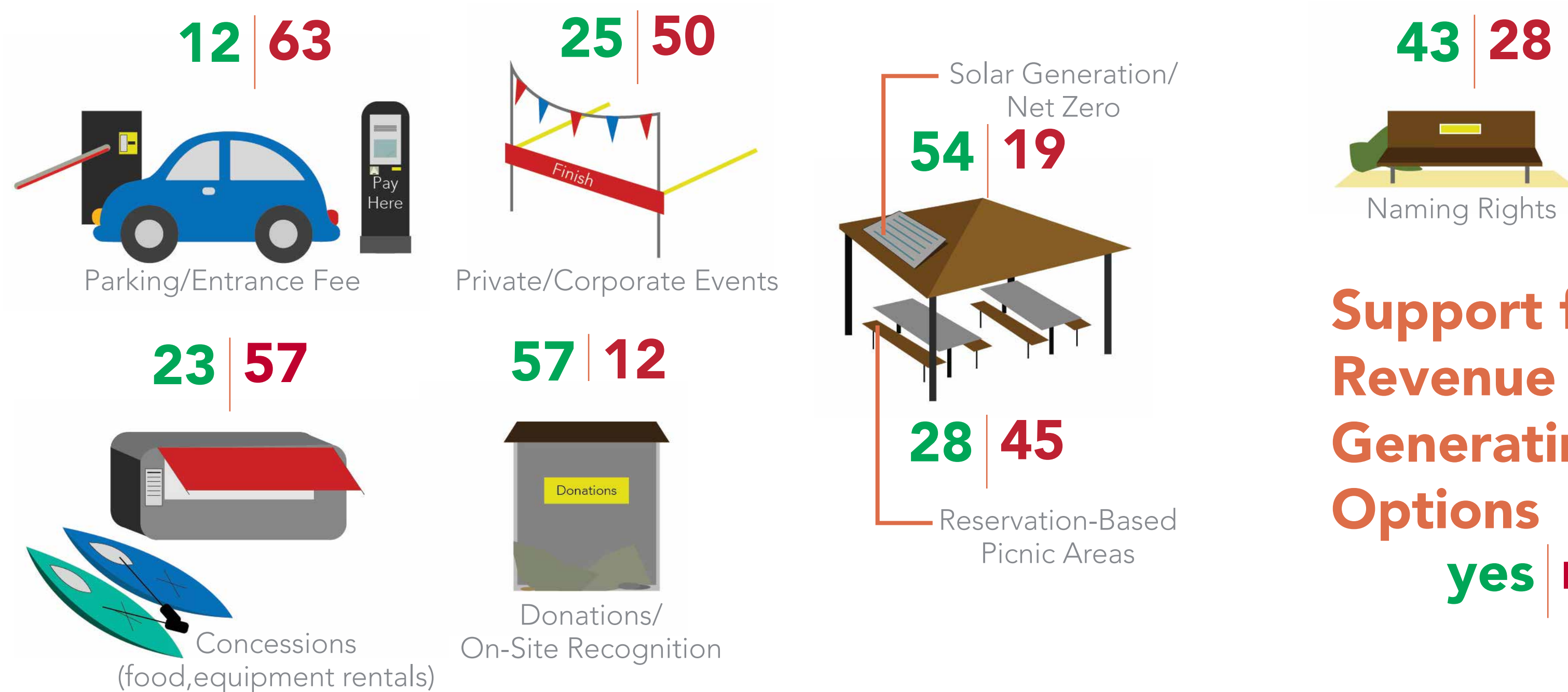
GOAL 3
Increase park opportunities

GOAL 5
Radio controlled aircraft research

GOAL 2
Respect Measure J



what concerns do you have for using the park?



Support for Revenue Generating Options
yes | no